

PLENTY

Winter 2026

food gatherers®
fighting hunger where we live

PARTNER
FOOD BANK OF
FEEDING
AMERICA

Washtenaw Community Fills the Federal Shutdown Gap

Starting in October 2025 we endured the longest government shutdown in U.S. history. During the 43-day span, some federal employees lost their jobs, and others labored without pay. This abrupt change triggered widespread anxiety and stripped many local households of their ability to afford groceries.

This was the first time ever that SNAP benefits were suspended during a shutdown. In Washtenaw County, **8.9% of households**—who rely on SNAP to survive—grappled with the uncertainty of when their benefits might return.

Demand surged immediately. In November, Food Gatherers fielded **triple our usual call volume** from neighbors seeking help. Simultaneously, traffic to our "Find Food" website page—the county's primary resource for free meals—skyrocketed to **four and a half times** its normal rate.



Food Gatherers quickly increased the volume and rate of distributions to our community partners – many of which ramped up staffing and hours to expand access to food. We also launched four emergency distributions from the Briarwood Mall parking lot, **supplying groceries to more than 3,000 individuals. More than half of these households relied on SNAP.**

As challenges grew, many local businesses and citizens stepped into action. Volunteers signed up for extra shifts and braved the cold to staff emergency distributions. Donors provided hundreds of "Lunches with Love" (pre-packed bagged meals), and our community **doubled the number of food and fund drives** compared to last year.

Community High School's Campaign to Fight Hunger was especially inspiring. Determined to help meet the urgent need, CHS students shattered their previous records. Between Halloween and Thanksgiving, **they raised \$128,000**—providing the equivalent of **256,000 meals** for hungry neighbors.

We are grateful for a community that responds quickly and wholeheartedly during times of crisis – helping Food Gatherers be the adaptable, resilient food safety net that is so vital right now.

Together, we can create a future where no child, adult, or senior in Washtenaw County goes hungry.

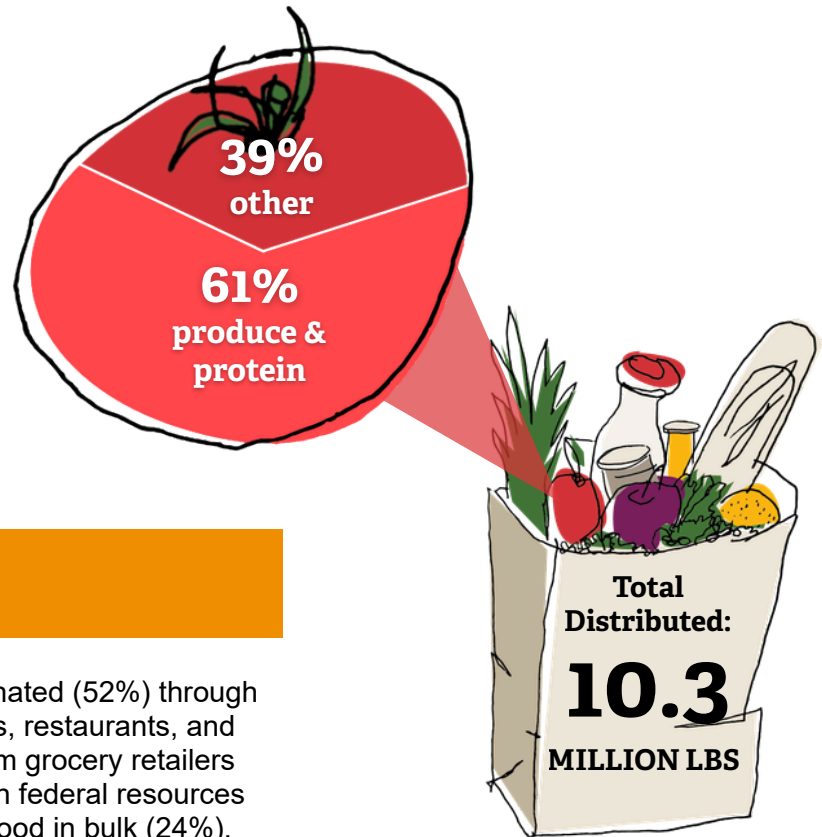
“
Food Gatherers makes sure we have things like fresh meat and vegetables no matter what – even when the federal supply falls short. The way they stepped up during the SNAP disruption, and during federal cuts earlier this year, is incredible. Our shelves have stayed full despite an increase in need.
”

-Amanda Kelly, SOS Community Services

Food Gatherers Annual Report

Fiscal Year 2025: July 1, 2024 - June 30, 2025

The data in this report is a testament to the dedication of all our community partners, donors, volunteers, and advocates in the fight against hunger. Despite challenges, your support helped us distribute 10.3 million pounds of food in fiscal year 2025 to 140 food pantries and meal programs across Washtenaw County. Together, we provided the equivalent of **8.5 million meals to 60,000 neighbors facing hunger.**



Food Sources

More than half of the food we distributed was donated (52%) through individual donors, food drives, farms and gardens, restaurants, and our food rescue program, which collects food from grocery retailers across the county. We also received food through federal resources (24%) and by leveraging our ability to purchase food in bulk (24%).

Working Together

Volunteers are at the heart of our mission. In FY2025, **4,100 volunteers** generously dedicated **55,000 hours** of their time sorting and packing rescued food, delivering food to partner agencies on food runs, cooking and serving meals, and helping out at special events.



Program Impact

Food Gatherers Community Kitchen served 63,000 lunches and dinners to neighbors experiencing food insecurity.

The **Summer Food Service Program (SFSP)** served 112,000 meals across 7 sites during the summer months when many kids lose access to free school meals.

The **Healthy School Pantry Program (HSPP)** partnered with 22 schools to serve food to 2000 families per month, including 4,300 children.

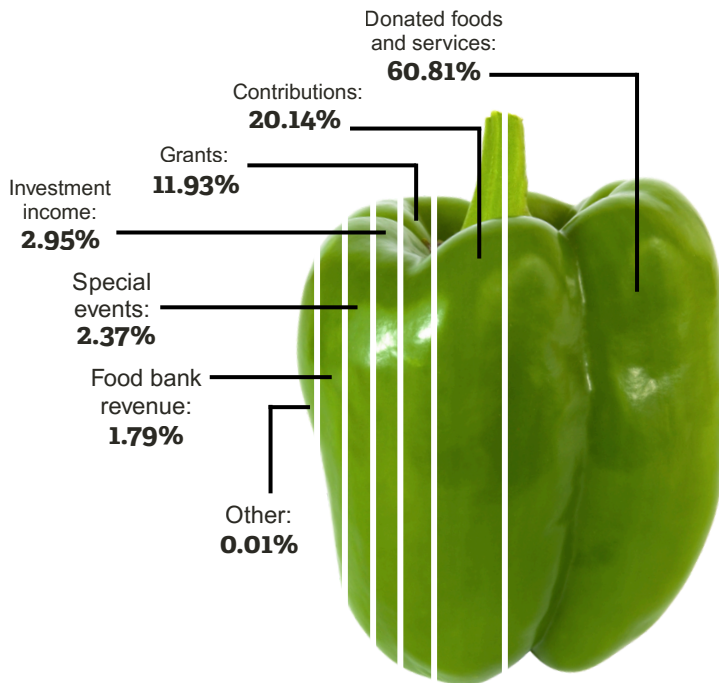
Neighborhood Grocery Initiatives (NGIs) provided 875,000 lbs of food to residents at low-income housing sites.

Project DASH - Food Gatherers' partnership with DoorDash - made 11,000 deliveries to homebound neighbors.

Revenue

Total: \$23,672,931

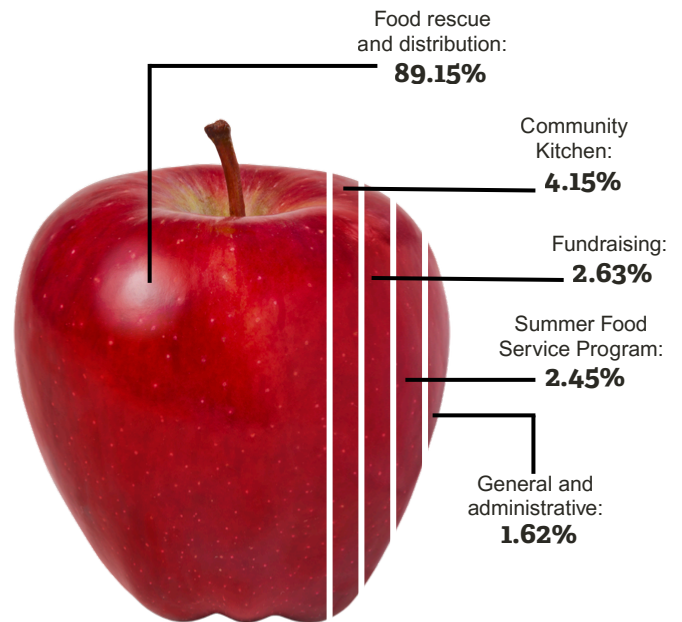
Donated foods and services.....	\$14,394,355
Contributions.....	\$4,767,376
Grants.....	\$2,823,370
Special events.....	\$560,526
Food bank revenue.....	\$424,640
Investment income.....	\$699,528
Other.....	\$3,136



Expenses

Total: \$23,047,711

Food rescue and distribution.....	\$20,547,408
Community Kitchen.....	\$957,526
Fundraising.....	\$605,373
Summer Food Service Program.....	\$564,318
General and administrative.....	\$373,086



Board of Directors

Veretta Nix, Chair, Human Resources Director, Zingerman's Community of Businesses

Jim Lee, Vice Chair and Secretary, Altarum Fellow, Altarum Institute

Christopher Tressler, Treasurer, Senior Director of Tax and Asset Accounting, Wacker Chemical Corporation

Eileen Spring, President and CEO, Food Gatherers

Susan Aaronson, Lecturer / Director of Dietetics Program, Dept of Nutritional Sciences, UofM School of Public Health

Gary Bruder, Attorney, Bruder PLC

Tony Denton, Senior Vice President and Chief Environmental, Social and Governance Officer, University of Michigan Health System

Nell Dority, Chief of Staff, Vice President for Government Relations, University of Michigan

Angela Jackson, Attorney, Hooper Hathaway, P.C.

David Lamb, Chairman, CEO and President, Oxford Bank and Oxford Bank Corporation

Jackie Lapinski, Vice President Performance Excellence, Trinity Health Michigan

Cindy Leung, Assistant Professor of Public Health Nutrition, Harvard University

Juan Marquez, Medical Director, Washtenaw County Health Department

Kelly Stuppel, Program Manager, Washtenaw Health Project

Simon Whitelocke, Past Chair, Vice President, ITC Holdings Corp.

Subscribe to End Hunger



“It’s automatically withdrawn from my account just like any other subscription.”

For \$15 a month - less than the cost of a streaming service - you can provide a nourishing meal every day of the year.

Full Plate Partners benefit from:

- automatic monthly deductions
- annual statements for convenient tax preparation
- flexibility to change or suspend your donation at any time
- specialized thank-yous with exclusive updates

Sign up today at foodgatherers.org/subscribe/



Honoring our Bread Winners

Our sponsors make a huge difference for individuals and families in Washtenaw County by generously providing the resources Food Gatherers needs to ensure our community is nourished.

That’s why we wanted to feature our Bread Winners, Food Gatherers’ leading corporate sponsors, more prominently on our eight trucks. Now, with a bright carrot-orange backdrop, we can better highlight the organizations that help fuel the fight against hunger.

Thanks to our friends at Grafraktri, our vision for the trucks has come to life!



Upcoming Events

Rotary Fights Child Hunger

March 9th - March 20th

Annual spring food and fund drive to provide meals for children and families who are facing hunger.

Details can be found FoodGatherers.org/Rotary

Stamp Out Hunger

Saturday, May 9th

Stamp Out Hunger food drive is the largest one-day food drive in the country and is hosted by the National Association of Letter Carriers.

Look for more information in your mailbox

Food Gatherers is committed to sound fiscal management, accountability, and transparency. For the 21st year in a row, we’ve received 4-stars from Charity Navigator, their highest rating. Food Gatherers is also a platinum-level Candid participant, demonstrating our commitment to transparency. You can view all of our annual reports, 990 forms, and audited financial statements on our website.



Stay in touch!

Food Gatherers Main Office

Address: 1 Carrot Way, Ann Arbor, MI 48105

Main Office: (734)761-2796

info@foodgatherers.org

www.foodgatherers.org

@FoodGatherers